



medical imaging SOFTWARE and DICOM SERVER

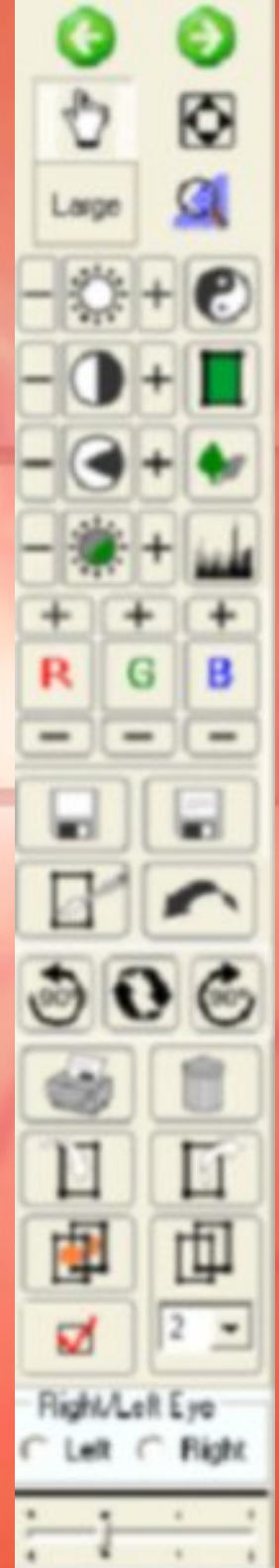
New Vision Fundus Medical Imaging Software

Overview

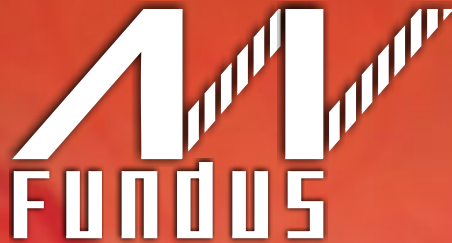
New Vision integrates automated microscopes, digital cameras and software and provides convenient means for Digital image acquisition, storage, manipulation, and analysis, as well as data exchange and data backup. New Vision solves and simplifies medical research analysis. Various image processing functions provide tools for diverse imaging tasks such as visualization, enhancement, measurement, and documentation. Modular architecture of New Vision allows presentation of a custom system that will fit almost any Digital Imaging equipment and will satisfy any customer's needs. New Vision is the best choice for professional Medical Imaging.

Features

- Automatic image acquisition;
- Easy image drag-and-drop inserting;
- Image editing and manipulation;
- Image annotation;
- Image-to-image registering and concurrent drawing;
- Image comparison;
- Cup-to-disk ratio measurement;
- Automatic PDT drawing and analysis;
- Efficient backup and restore mechanism;
- Direct burning to CD and DVD;
- Customizable printout support;
- DICOM Image processing support (optional);
- Compatible with most digital cameras; Currently being distributed with Canon and Nikon DSLR Fundus Cameras.



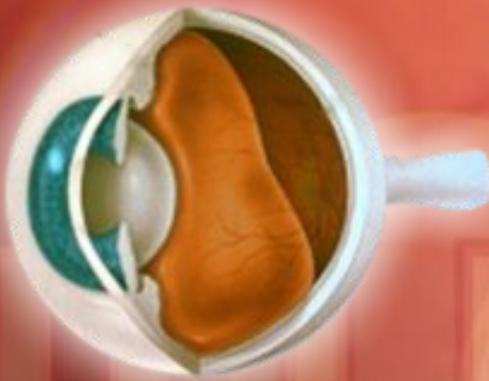
btt bilgi teknoloji tasarım ltd.



New Vision DICOM Server

Overview

New Vision DICOM Server is a complete DICOM Solution enabling seamless integration of all types of DICOM-enabled automated microscopes and digital cameras with New Vision Medical Imaging Software, leading ultimately to a complete Hospital PACS system. New Vision DICOM Server offers full-featured DICOM support and functionality.



Features:

- DICOM 3.0 Compatible
- Includes a DICOM Server SCP;
- Fully supports Lossless Jpeg Images;
- Creates DICOM objects from any image;
- Archive images to DICOM servers;
- Query other DICOM servers and retrieve images;
- Web access (optional);

DICOM Conformance Statement:

- BTT DICOM Server is a Level 2 (Full) Service Class Provider;
- Storage Service Class - Level 2 (Full);
- Related General SOP Class - Level 2 (Full);
- Signature Support - Level 3;
- Lossless Jpeg support - 1.2.840.10008.1.2.4.70, 1.2.840.10008.1.2.4.57;
- After a successful C-STORE command a SOP instance is stored in a local DICOM Directory and saved to a database together with patient and study information.
- SOP Instances are accessed via C-GET protocol or using New Vision Imaging Software;
- SOP Instances are stored indefinitely, until deleted by user or moved to a permanent storage location (Backup);
- Full implementation of DIMSE-C protocol;

